



MeterData4U[®] meter data management solution

Harness the full power of advanced metering infrastructure and SAP S/4HANA[®] to transform your meter-to-cash and customer service operations.

Cognizant MeterData4U is a patented, CIS-embedded MDM that simplifies meter data management and business process orchestration and helps optimize your total cost of ownership.¹

Industry challenges

Advanced metering infrastructure (AMI) promises to transform your business, but traditional AMI solution architectures involve separate meter data management (MDM) systems. This disjointed approach is costly to implement, run and maintain and limits the benefits possible from AMI.

Legacy MDM solutions evolved as separate systems because CIS solutions in the past couldn't handle high-volume metered data.

This outdated architecture became a disparate, duplicative and non-value-added technology stack that greatly increases the overall integration burden. It also elongates business processes and makes them more error-prone. This legacy meter data management approach severely curbs the benefits of AMI via the unnatural segregation of AMI data from infrastructure and customer data.

1. Patent No.: US 11,460,321 B2

Value drivers



Reduce solution complexity and cost

Eliminate the middle non-value added technology stack that is the traditional MDM. Save on hardware, platform, product licensing, implementation/integration cost, plus ongoing support costs.



Accelerate meter-to-cash and field operations

Streamline your meter-to-cash processes by reducing systems, handoffs and wait steps and eliminating integration/synchronization exceptions. Increase productivity of your revenue analysts with the reduction in architectures and data models, logins, terminologies, disparate and duplicative screens, etc.



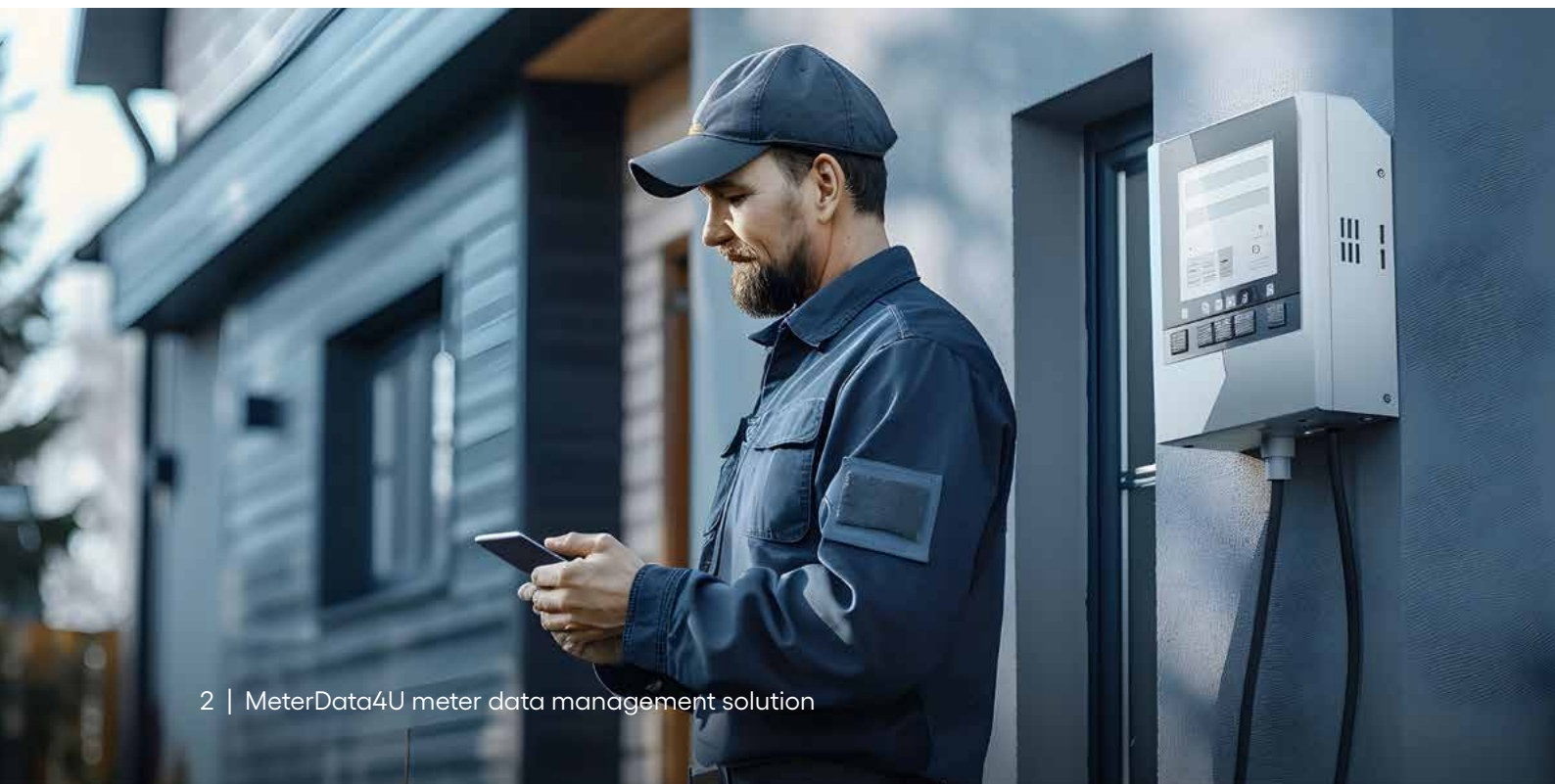
Enhance customer service

Become a more empathetic utility and be more relevant to your customer. Leverage the MeterData4U platform to launch proactive bill alerts based upon configurable thresholds; warn your customers of potential water leakage problems—the possibilities are endless.



Help SAP S/4HANA technology help you

Wonder no more about how SAP S/4HANA can deliver value with your customer services and billing operations. MeterData4U unites two disparate sets of data—AMI data and commercial data—and births endless use cases for leveraging the processing power of SAP to not only do the right thing but to do it faster.



Collaborative approach

Make informed decisions with usage estimates

- Unification of both the meter the customer data supports accurate AMI estimation and validation

Accelerate billing

- Unite bill determinant calculation and bill computation in one system
- Eliminate handoffs across systems and the inherent wait steps and exceptions

Turn insight into immediate action

- Create service orders immediately when SAP S/4HANA analytics detect network or other data collection issues
- Create customer notifications when analytics detect a potential leakage problem

Run your business faster. Minimize your exceptions. Make more intelligent decisions. Be more relevant to your customer.

Unwind your tangled web of interfaces

- Eliminate 60 to 80 complex interfaces; eliminate future custom integrations to synchronize data to disjointed solutions as use cases evolve

Do more with SAP

- Consolidate access and security control in SAP for more coherent management strategy

Translate technology into better business. Your best-in-class CIS platform will do so much more. Use cases to harness the power of SAP S/4HANA.

Technology innovation

Turbocharge your MDM and enrich your data

- Leverage the power of SAP S/4HANA for lightning-fast execution of unified MDM and billing processes
- AMI data is meaningless without customer and infrastructure data. Combine them and open up endless use cases; simplify data orchestration and needless synchronizations

Our reporting strategy

MeterData4U employs a two-pronged approach to AMI reporting:

- Real-time and near-real-time operational reporting is enabled within your OLTP with SAP S/4HANA
- Maximizes the ability to turn insight to immediate and relevant action
- Delivers use cases like:
 - Meter read management
 - Validation and estimation
 - KPIs
 - Customizable billing, operations and deployment dashboards



Analytical reporting is supported in the analytics solution of your choice:

- MeterData4U publishes the metered data as a service immediately after VEE
- Cognizant can help transform your enterprise analytics solution to process and store the AMI data and implement AMI analytical use cases



Cognizant (Nasdaq-100: CTSH) is one of the world's leading professional services companies, transforming clients' business, operating and technology models for the digital era. Our unique industry-based, consultative approach helps clients envision, build and run more innovative and efficient businesses. Headquartered in the U.S, Cognizant is ranked 185 on the Fortune 500 and is consistently listed among the most admired companies in the world. Learn how Cognizant helps clients lead with digital at www.cognizant.com or follow us @Cognizant.

World Headquarters

300 Frank W. Burr Blvd.
Suite 36, 6th Floor
Teaneck, NJ 07666 USA
Phone: +1 201 801 0233
Fax: +1 201 801 0243
Toll Free: +1 888 937 3277

European Headquarters

280 Bishopsgate
London
EC2M 4RB
England
Tel: +44 (01) 020 7297 7600

India Operations Headquarters

5/535, Okkiam Thoraiappakam,
Old Mahabalipuram Road,
Chennai 600 096 India
Tel: 1-800-208-6999
Fax: +91 (01) 44 4209 6060

APAC Headquarters

1 Fusionopolis Link,
Level 5 NEXUS@One-North,
North Tower, Singapore 138542
Phone: + 65 6812 4000

© 2024, Cognizant. All rights reserved. No part of this document may be reproduced, stored in a retrieval system, transmitted in any form or by any means, electronic, mechanical, photocopying, recording, or otherwise, without the express written permission of Cognizant. The information contained herein is subject to change without notice. All other trademarks mentioned here in are the property of their respective owners.